

# Beginning Solfege Worksheet #1

Example:

Do Re Mi Fa Sol La Ti Do

Write out Solfege for the following notes:

\_\_\_\_\_

\_\_\_\_\_

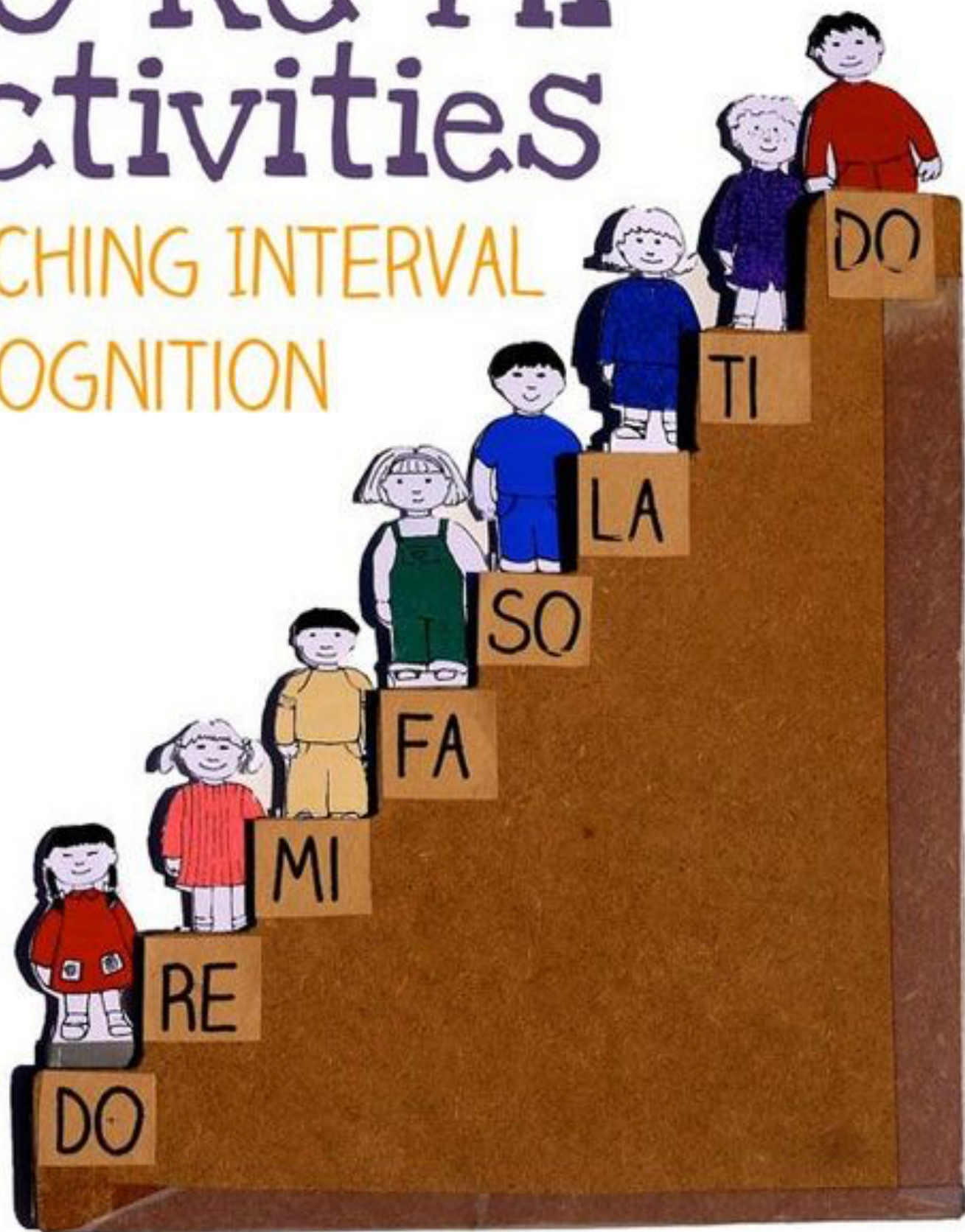
\_\_\_\_\_

\_\_\_\_\_

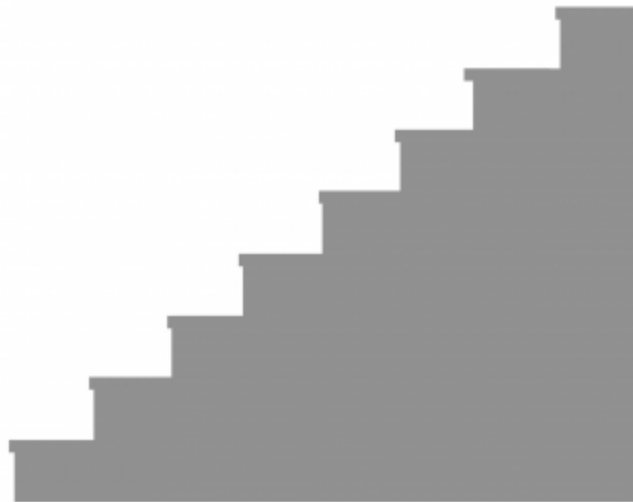
\_\_\_\_\_

# Do Re Mi Activities

TEACHING INTERVAL  
RECOGNITION



USING DO RE MI STEPS



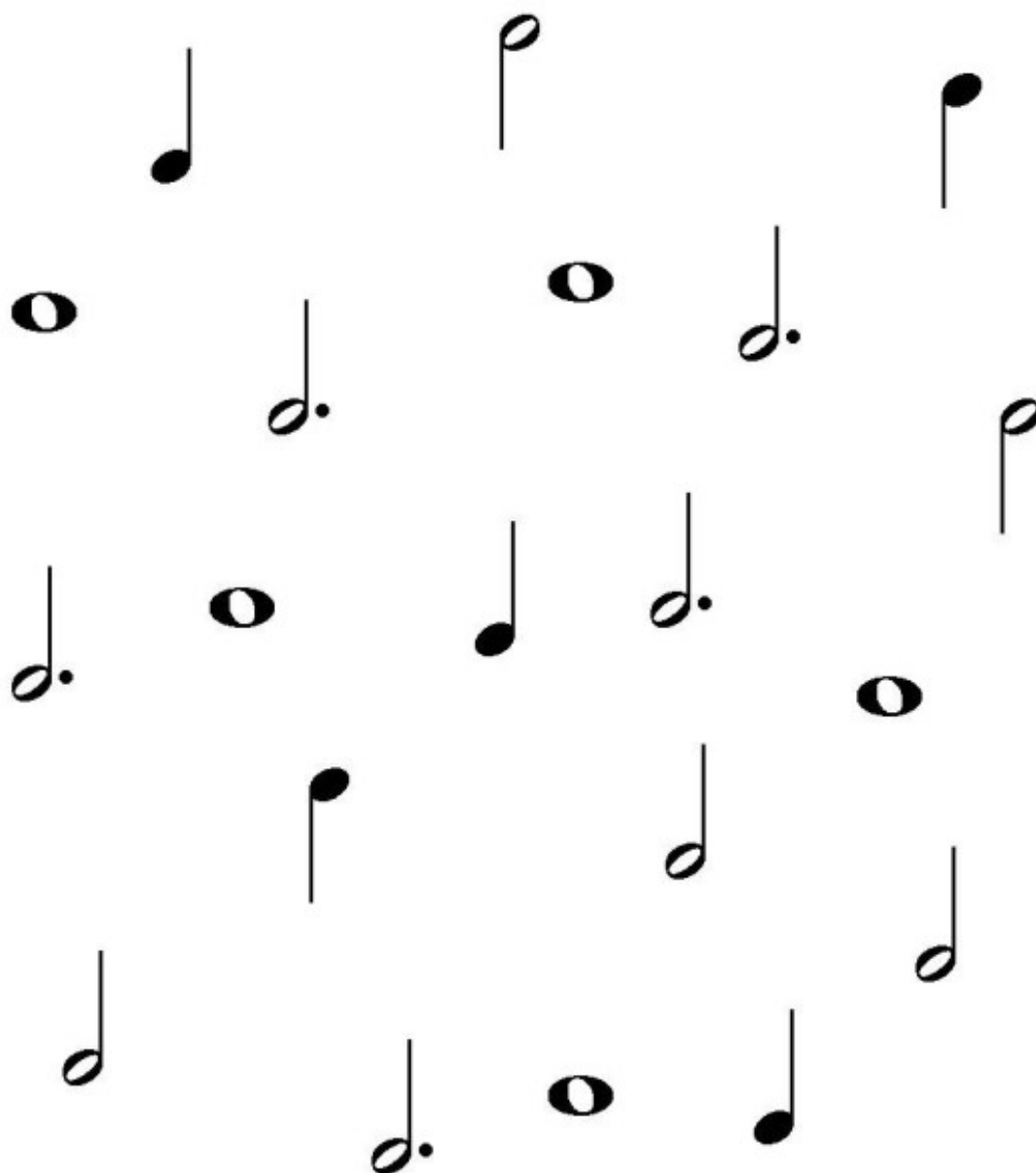
# Music Worksheet

Circle the quarter notes with a **RED** crayon.

Circle the half notes with a **BLUE** crayon.

Circle the dotted half notes with a **GREEN** crayon.

Circle the whole notes with an **ORANGE** crayon.



## Note Values - Whole, Half & Quarter Notes

Instructions: Write in the spaces provided  
how many beats each note lasts.



A musical staff in treble clef with a 4/4 time signature. It contains seven notes: a whole note (C4), a half note (D4), a quarter note (E4), a quarter note (F4), a whole note (G4), a quarter note (A4), and a quarter note (B4). Below the staff are seven horizontal lines for writing the number of beats for each note.

4    —    —    —    —    —    —



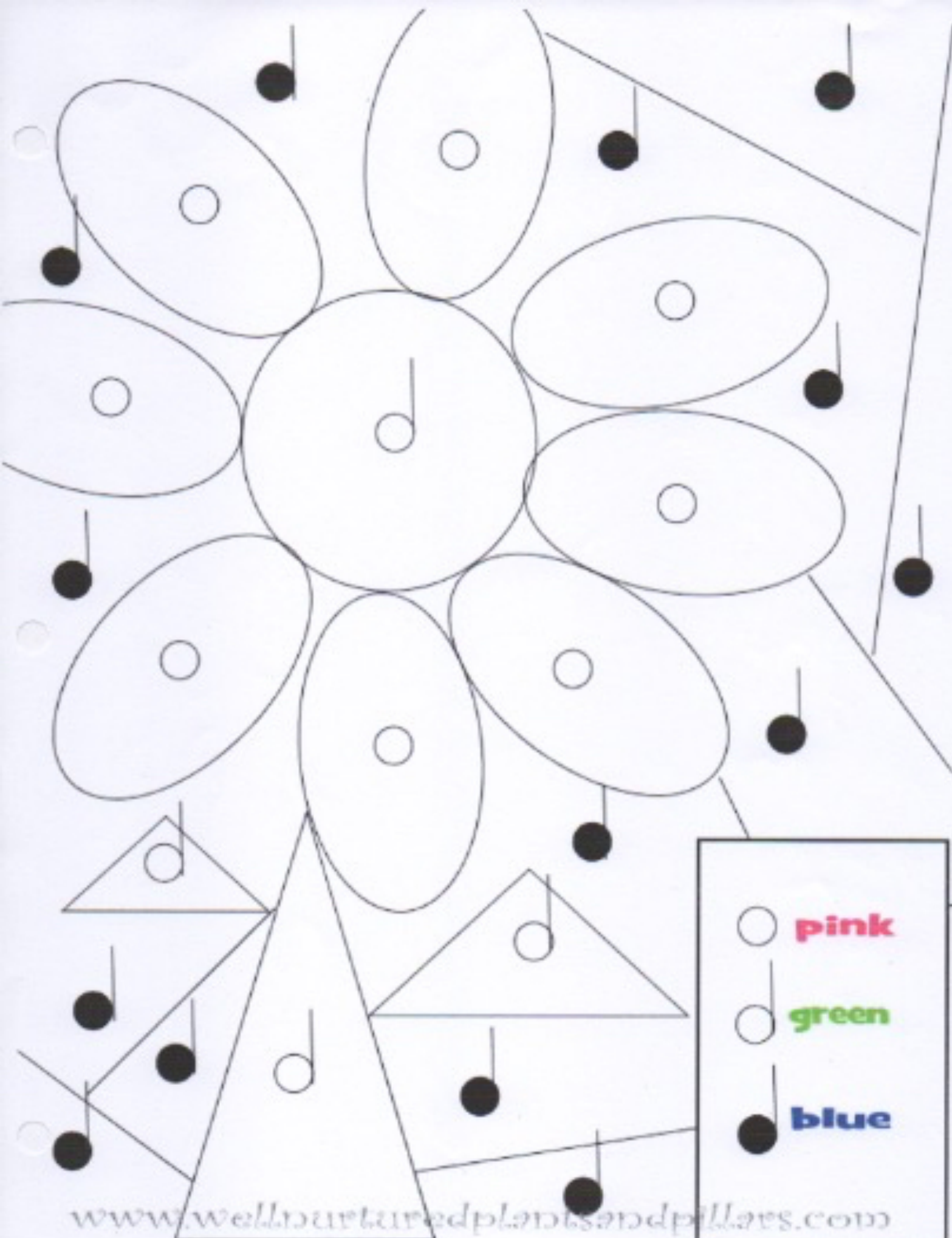
A musical staff in treble clef with a 4/4 time signature. It contains seven notes: a quarter note (C4), a whole note (D4), a half note (E4), a whole note (F4), a quarter note (G4), a half note (A4), and a whole note (B4). Below the staff are seven horizontal lines for writing the number of beats for each note.

—    —    —    —    —    —    —



A musical staff in treble clef with a 4/4 time signature. It contains seven notes: a half note (C4), a quarter note (D4), a whole note (E4), a quarter note (F4), a half note (G4), a whole note (A4), and a quarter note (B4). Below the staff are seven horizontal lines for writing the number of beats for each note.

—    —    —    —    —    —    —



-  **pink**
-  **green**
-  **blue**

